

Base assembly for Speedy 300

1) Base Frame Contents:

- 4 castor wheels, 2 with locks
- 6 metric Allen head bolts
- 1 face panel
- 2 side panel frame supports

2) On the 2 side supports you will find holes on both sides of the support on some models, these supports are directional and can only go one way, find out which way the face panel will line up and that will be your front.

- *Note: The side supports have a large pocket between the upright supports that is covered with a metal plate, these pockets face inward towards each other (**Pocket Noted in Figure 1 & 2**)*

3) Start by laying the side support on its back with the face panel attachment bolt holes facing up. Attach the face panel to the side support with the provided Allen head bolts, you can then fasten these down.

4) Next, pick up the other side support and repeat step 3.

5) You can now tip the base on its top to install the wheels on the base, locking castors go on the front (**Figure 3**)

- *(Note: Top and bottom are defined by, the top of the side support having a metal plate that runs the length with two large holes and two small holes, bottom has no plate, instead has two threaded holes affixed in frame, these are for the castors)*
- ***Base** may appear to be flimsy but this is due to the fact that it depends on the structure of the machine to hold it straight and once attached is very strong and stable.*

6) With the help of a forklift OR 2-3 people you can now lift the machine onto its base, be sure to line up the rubber feet on the bottom of the machine with the large holes on the top of the frame (**Figure 4**), then take the remaining two Allen bolts and attach the machine to the base and fasten.

Figure 1

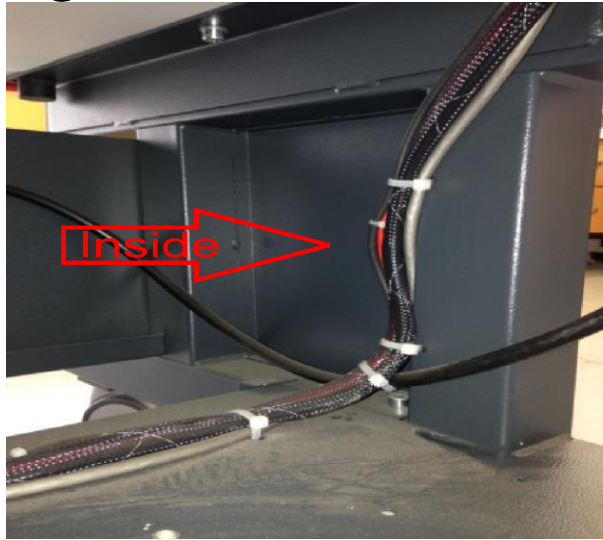


Figure 2



Figure 3

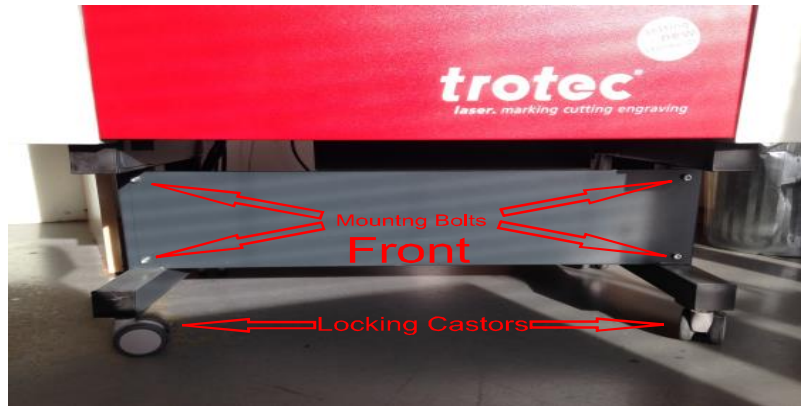
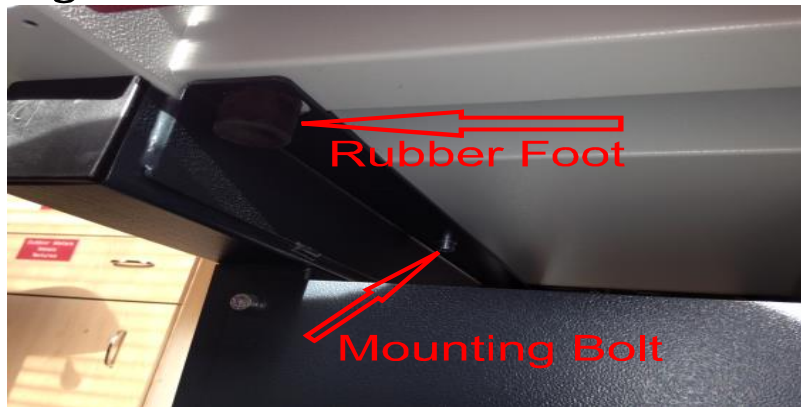
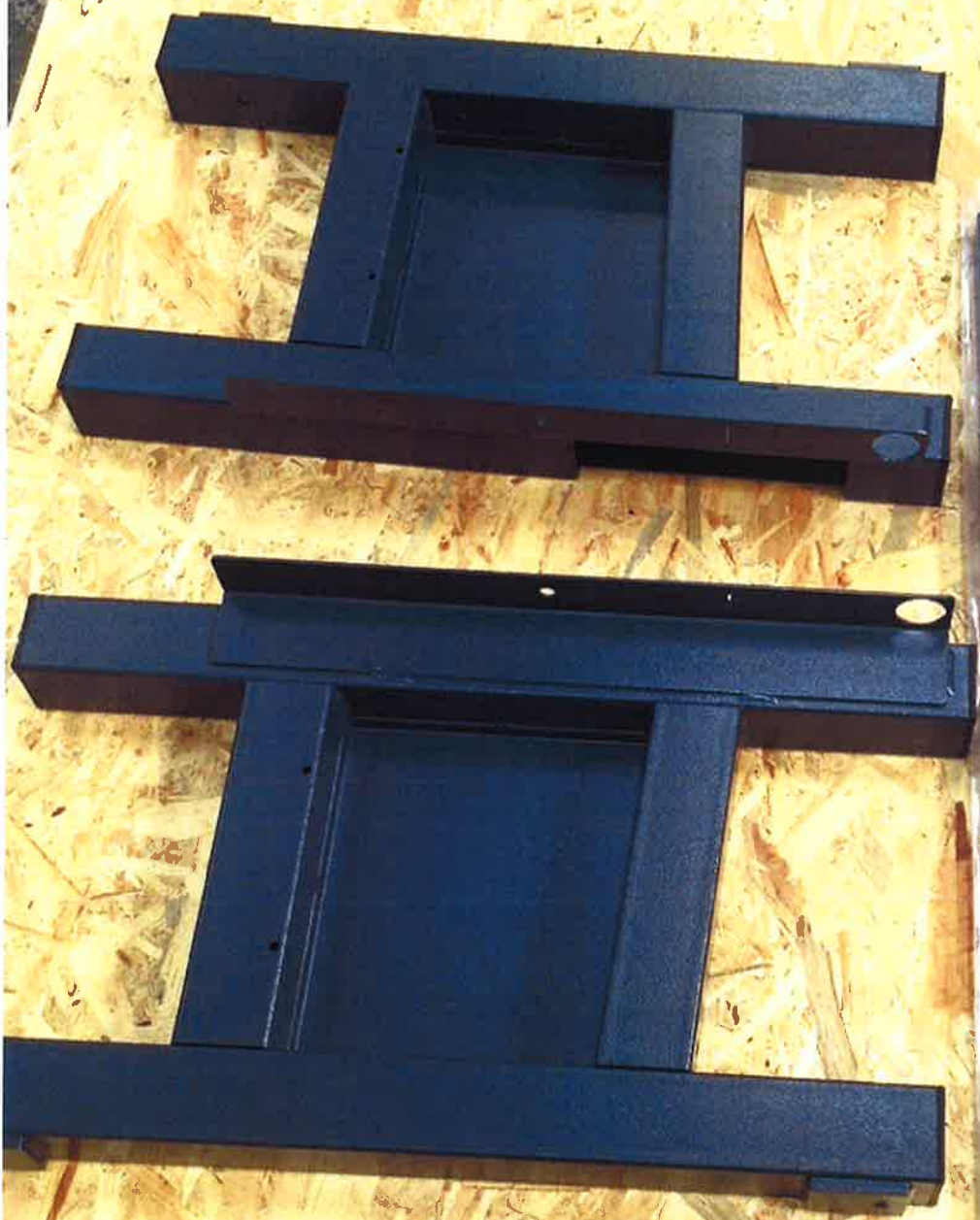


Figure 4





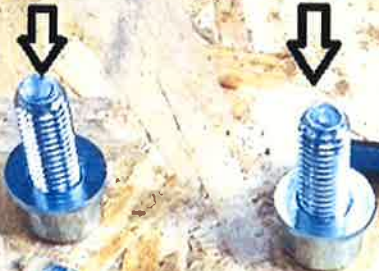
4 roulettes



6 vis 2 rondelles



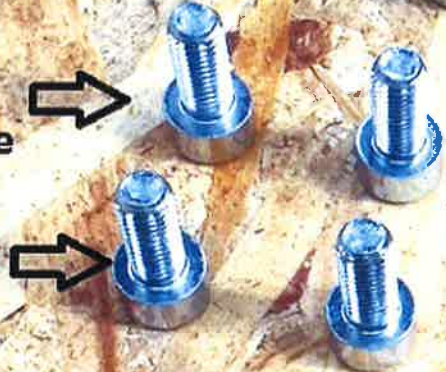
2 vis+rondelles pour
visser la machine par
dessous

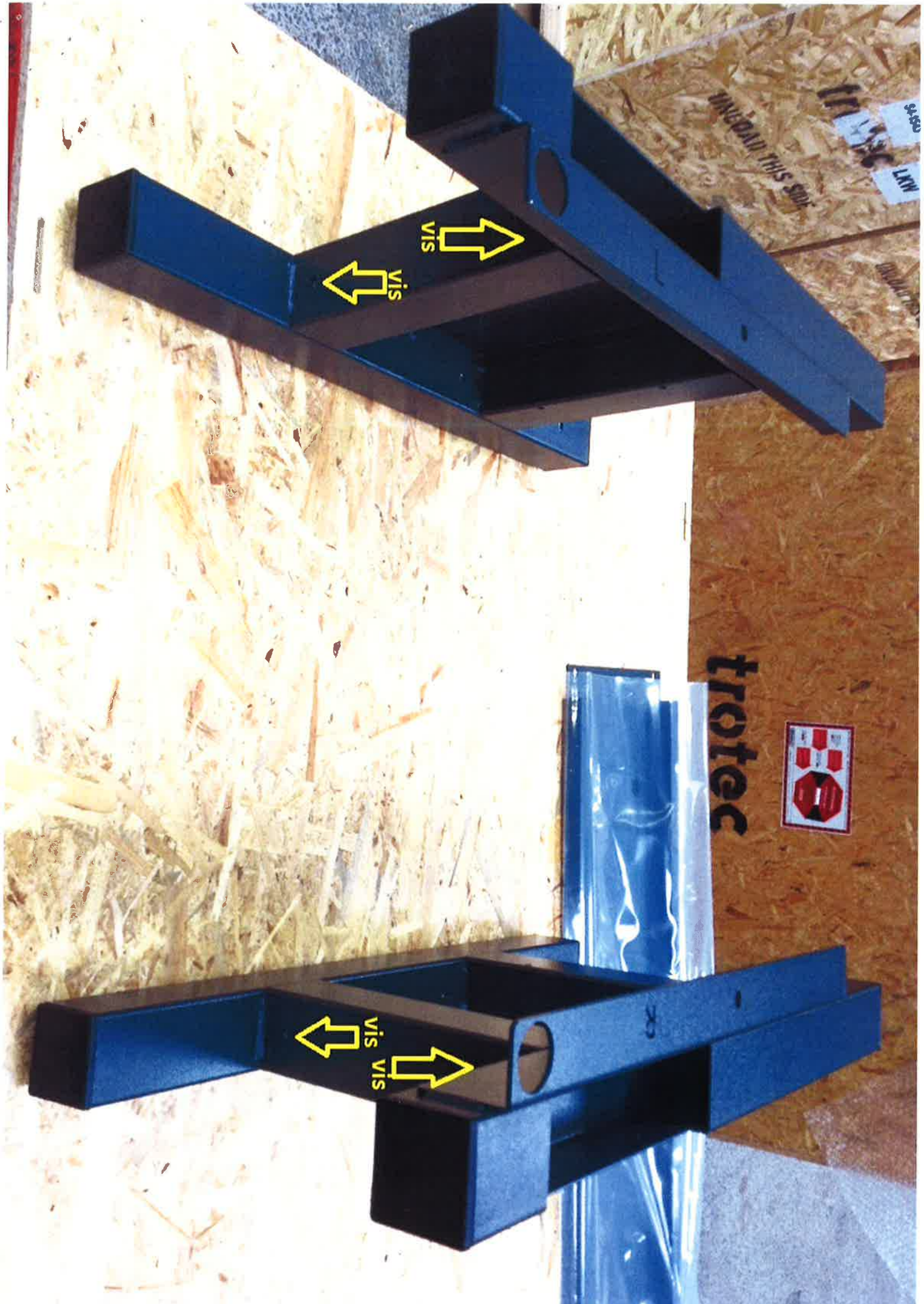


clef
à
laine n°6



vis
pour
montage
horizontal





VIS
VIS

VIS
VIS

trotec



UNGEDRILLT THIS SIDE

171 136
LAW

devant



protac

48



avec frein se monte a l'avant **tres important**

sans frein se monte à l'arrière



clef de 13

13





UNLOAD THIS SIDE

UNLOAD THIS SIDE

frotloc
frotloc
frotloc
frotloc
frotloc
frotloc
frotloc
frotloc
frotloc
frotloc



⊠
↑↑
☂

Caution! Vorsicht!
Caution! Vorsicht!
Caution! Vorsicht!
Caution! Vorsicht!
Caution! Vorsicht!

reste 2 vis avec rondelles pour fixer la machines

